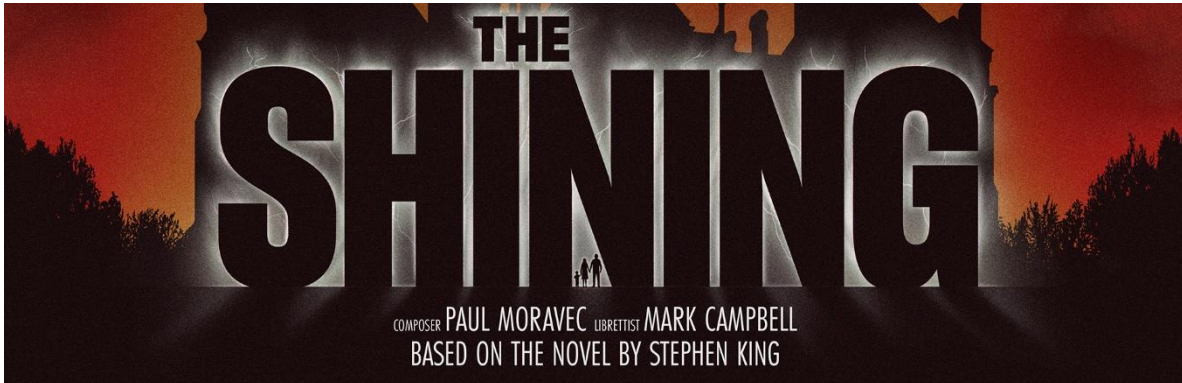




For Immediate Release

OPERA PARELLÈ PRESENTS WEST COAST PREMIERE OF



THREE PERFORMANCES ONLY: JUNE 2, 3 & 4, 2023

BLUE SHIELD OF CALIFORNIA THEATER YERBA BUENA CENTER FOR THE ARTS

Purchase tickets online: <https://operaparallele.org/theshining>

SAN FRANCISCO (May 10, 2023) — Opera Parallèle, San Francisco’s leading producer of contemporary opera, will present the West Coast premiere of *The Shining*, the critically acclaimed opera by the Pulitzer Prize and Grammy Award-winning team of composer **Paul Moravec** and librettist **Mark Campbell**, for three performances June 2, 3 and 4 at the Blue Shield of California Theater, Yerba Buena Center for the Arts, 700 Howard Street.

Based on **Stephen King’s** iconic novel, a psychological thriller with supernatural overtones, Opera Parallèle will present *The Shining* in a new multi-media stage production and feature the premiere of a newly created chamber music orchestration by the composer. Moravec and Campbell’s work has been hailed as “a thoroughly spectacular opera ... gripping from beginning to end,” (*Bachtrack*) and “... it stands out as one of the most effective new operas.” (*Kansas City Independent*)

Deep in the shadows of the Colorado Rockies, miles from where anyone can hear you scream, lurks the Overlook Hotel. For its new caretakers, the Torrance family, the only thing more unnerving than their profound isolation is the realization that they are not the hotel’s only guests. Their young son Danny, with his spine-tingling sixth sense, endures the house of horrors while his father faces demons – past and present, real and remembered – that hastens his descent into madness. What started as a desperate search for financial and marital sanctuary, spirals into a terrifying battle for sanity and survival.

Opera Parallèle's highly talented and diverse cast for *The Shining* features **Robert Wesley Mason***, **Kearstin Piper Brown***, **Tenzin Forder*** and **Michael Thompson***, **Kevin Deas***, **David Walton***, **Nathan Granner**, **Timothy Murray***, **Daniel Cilli**, **Molly Mahoney***, and **Christabel Nunoo**. The extensive cast includes an ensemble of Bay Area singers in multiple supporting roles.

The singers and orchestra will be conducted by Opera Parallèle's General and Artistic Director **Nicole Paiement**. The creative team includes director and concept designer **Brian Staufenbiel**; scenic designer **Jacquelyn Scott**; costume designer **Alina Bokovikova**; lighting designer **Jim French***; projection designer **David Murakami**; and hair & makeup designer **Y. Sharon Peng**. Joining the production team are assistant conductor **Jaymes Kirksey** and assistant director **David Toro**. Sung in English with projected supertitles, the two-act opera has a running time of two hours, twenty minutes with one intermission.

The Shining was originally commissioned by Minnesota Opera and premiered in 2016 to sold-out audiences, and has since enjoyed popular encore presentations by Opera Colorado and Lyric Opera of Kansas City. Opera Parallèle is the first company to create a new stage production - in collaboration with Hawaii Opera Theatre and Portland Opera - following the success of the premiere. King's famous novel of 1977 was the inspiration for **Stanley Kubrick's** celebrated award-winning film of 1980, which starred **Jack Nicholson**, **Shelley Duval** and **Danny Lloyd**. Mark Campbell's opera libretto is based on King's novel and not the film screenplay.

Major production support has been provided by **The National Endowment for the Arts**, **Don & Andrea Fellows Fineberg**, **Louise Fox**, **Philip Goward & Theodore Ueki**, **Jack & Betty Schafer**, **The Aaron Copland Fund for Music**, and **The Amphion Foundation**, with support from Producers Circle members **Donna Dubinsky** and **Len Shustek**.

Major support for Opera Parallèle has been provided by **Gordon Getty**, **The Lemala Fund**, **City & County of San Francisco Grants for the Arts**, **The Future Fund**, **Paul L. King**, **Scott R. Lord**, and the **Phyllis C. Wattis Foundation**.

The Bullhorn programming is supported in part through a **Civic Practice Grant from OPERA America's Opera Fund** and by **The Henry W. and Nettie Robinson Foundation**.

Opera Parallèle has a number of informative and behind-the-scenes ancillary events planned for the community in order to take a deeper dive into this extraordinary opera; online registration required. Individual tickets for *The Shining* performances are \$40 to \$180, with \$20 student tickets, and may be purchased online via City Box Office at <https://bit.ly/opshining> or operaparallele.org/theshining/.

###

Press Contact: Jon Finck; jonfincksf@gmail.com / +1 415 577 1323

N.B. *The Shining* performance and cast/creative team calendar is attached. Please connect for interviews, artwork and press credentials.

* Opera Parallèle debut